



COMUNE DI PORTO TORRES

Provincia di SASSARI

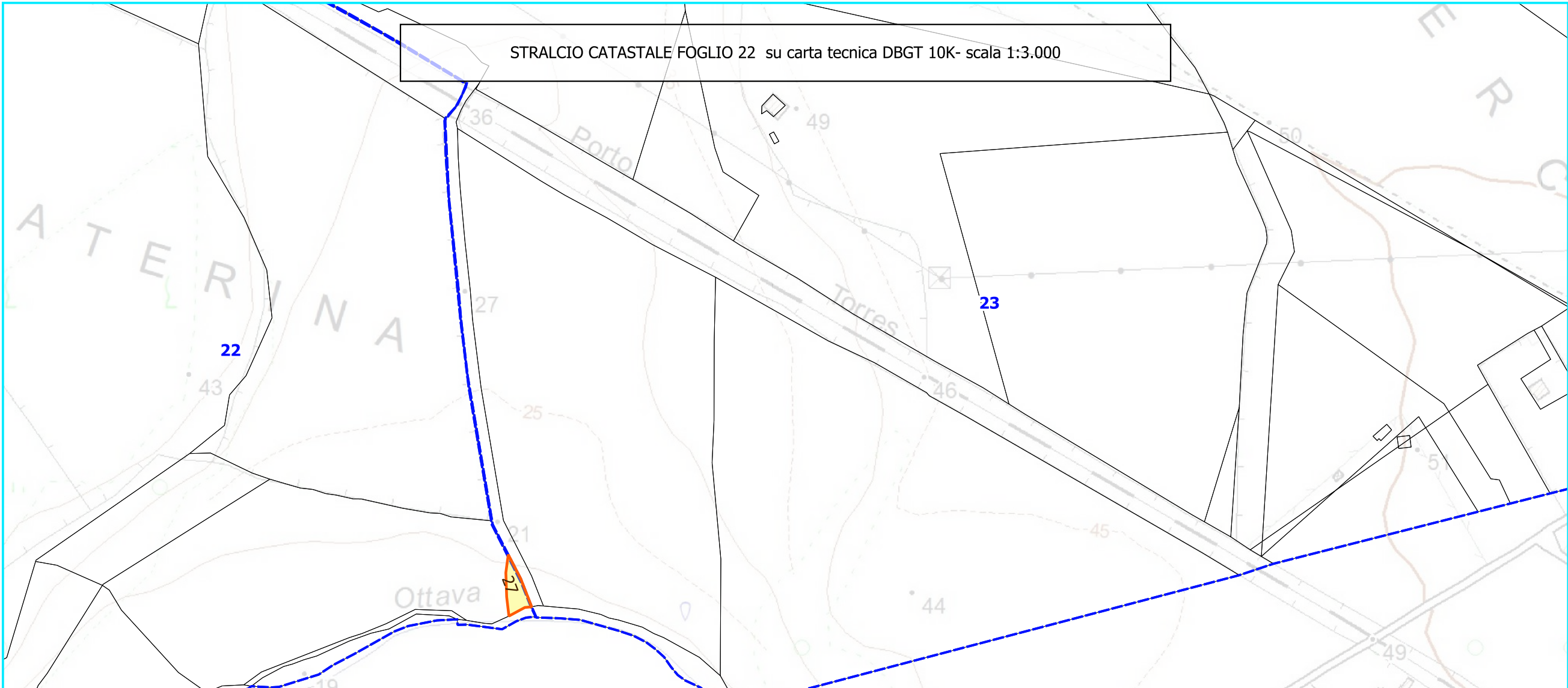
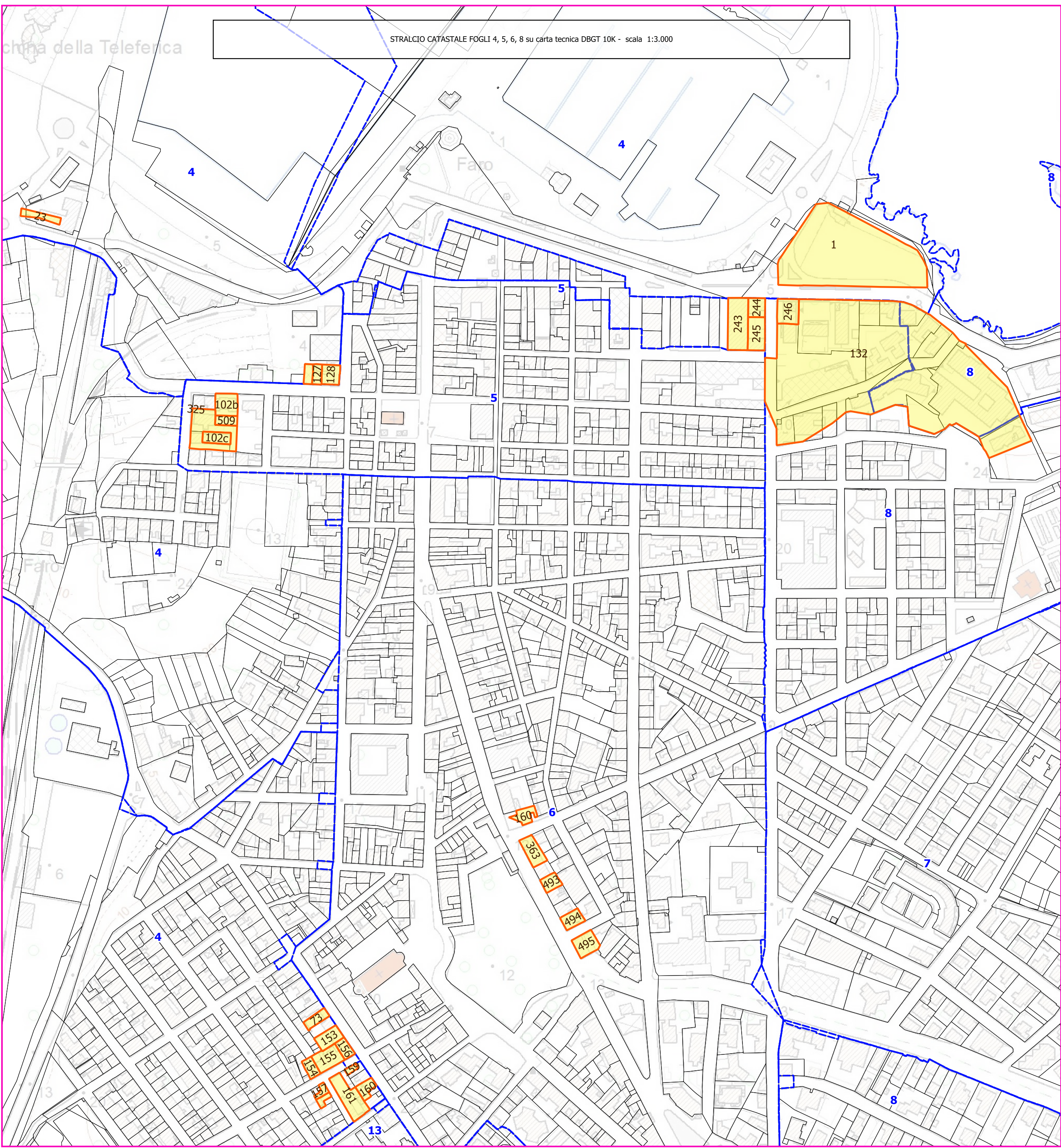
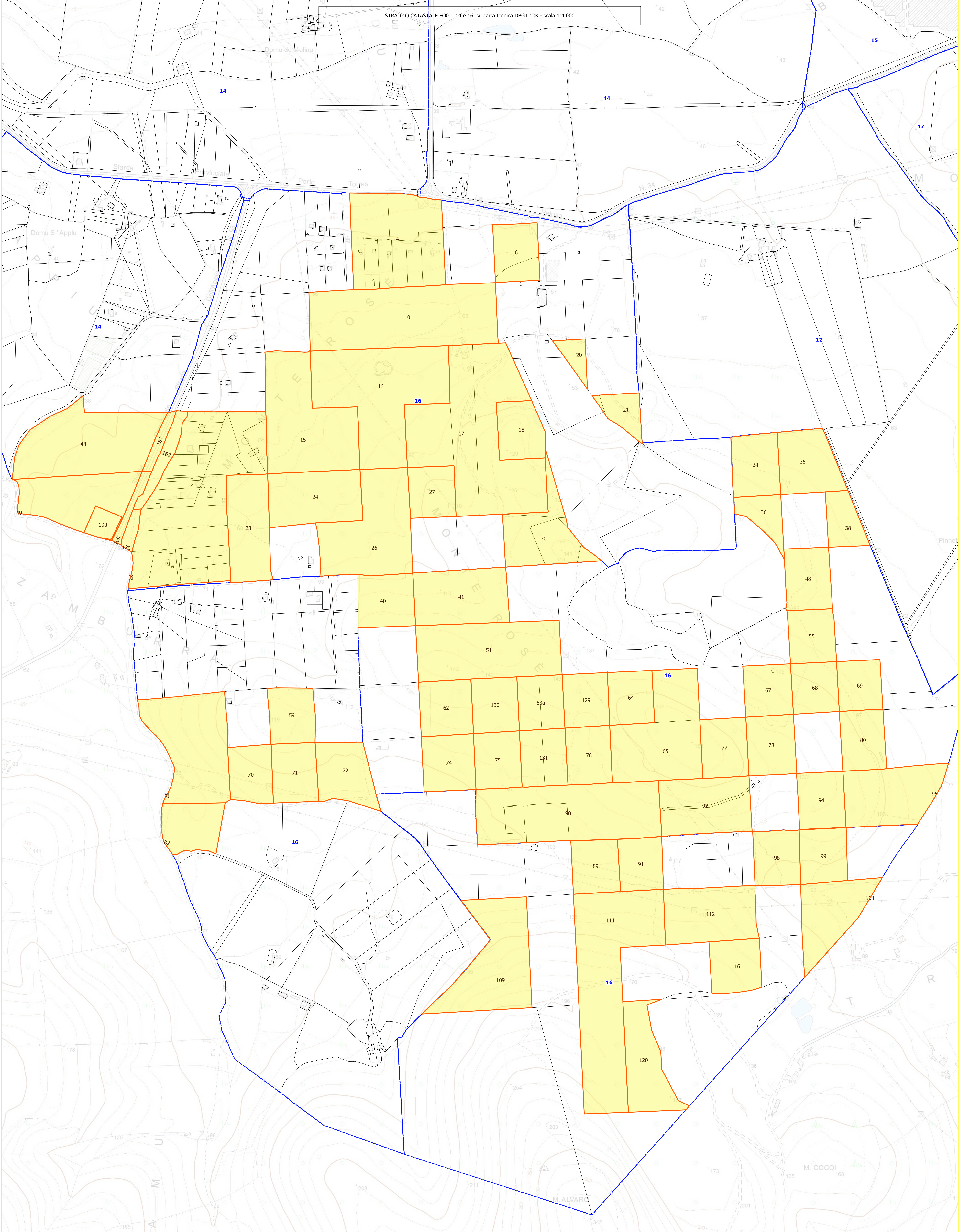
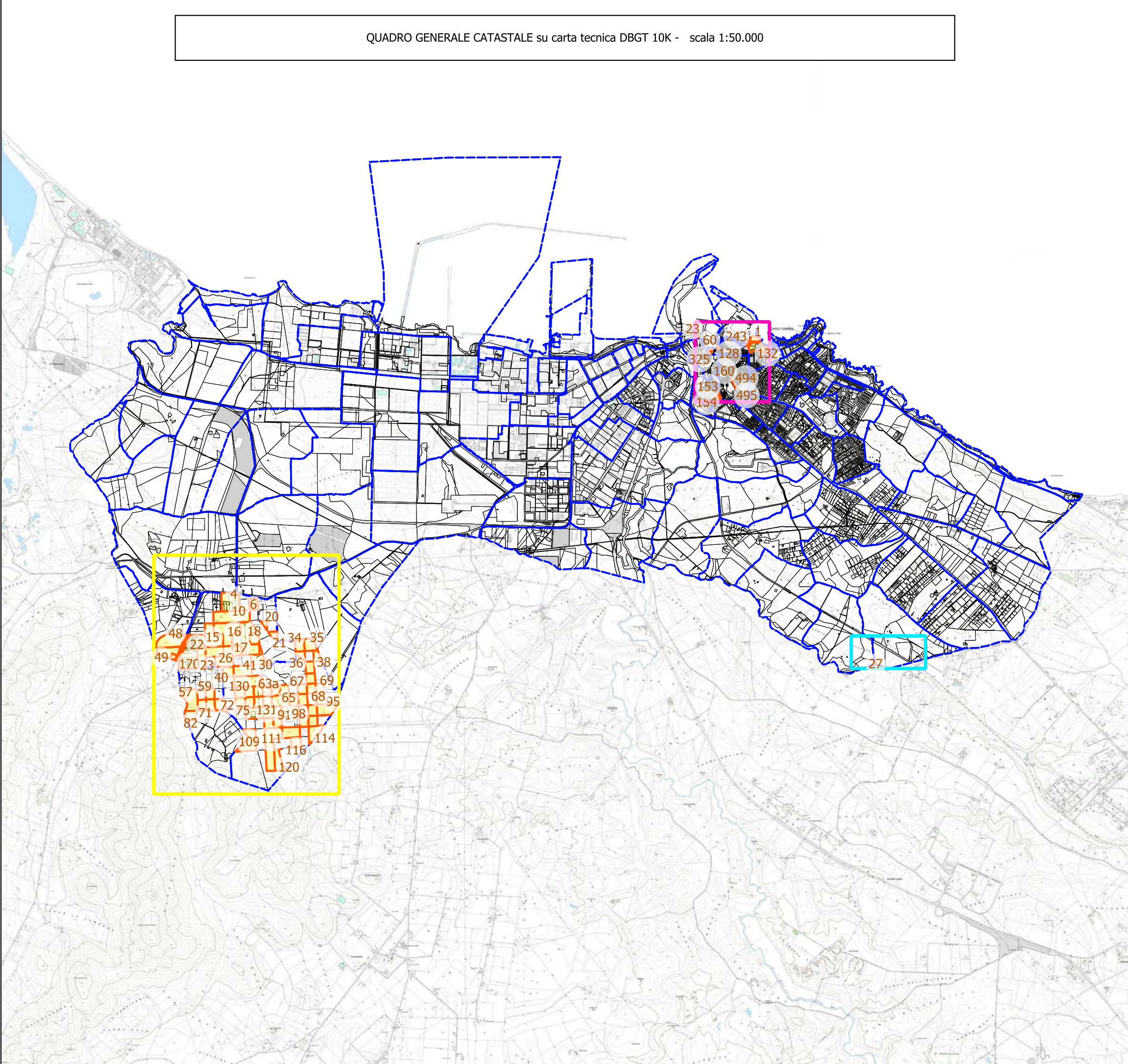
PIANO DI VALORIZZAZIONE E RECUPERO DEGLI USI CIVICI DEL COMUNE DI PORTO TORRES



| | |
|-------------------------------|--|
| Professionista: | Il Sindaco SIG. MASSIMO MULAS |
| DOTT. AGRONOMO MARCO PERRA | Il Dirigente ING. MASSIMO LEDDA |
| | Il Responsabile Unico del Procedimento ARCH. FABRIZIA MUZZU |

Elaborato:

1A - COROGRAFIA GENERALE DA DET. 278/2005



LEGENDA

- Limiti comunali Porto Torres
- Fogli catastali
- Usi Civici del Comune di Porto Torres come da Det. 278/2005

USI CIVICI

Foglio 1:
Particelle 23, 60, 73, 127, 128, 153, 154, 155, 156,
157, 158, 159, 160, 161, 325, 509

Foglio 5:
Particelle 102b, 102c, 243, 244, 245, 246

Foglio 6:
Particelle 160, 325, 363, 493, 494, 495

Foglio 8
Particelle: strade, 1, 132

Foglio 14:
Particelle 48, 49, 167, 168, 169, 170, 190

Foglio 16:
Particelle 4, 6, 10, 15, 16, 17, 18, 20, 21, 22, 23,
24, 26, 27, 30, 34, 35, 36, 38, 40, 41, 48, 51, 55,
57, 59, 62, 63a, 129, 130, 131, 64, 65, 67, 68, 69,
70, 71, 72, 74, 75, 76, 77, 78, 80, 82, 89, 90, 91,
92, 94, 95, 98, 99, 109, 111, 112, 114, 116, 120

Foglio 22:
Particella 27